

FOCUS ON ROAD SURFACES.



ENVIRONMENT ANALYSIS WITH LIDAR

350°Corridor-Profile-Scanner – CPS

- + 2 Mio. points per second
- + Recording corridor: 300 m
- + Accuracy: 3 – 7 mm
- + Laser class 1 (eye-safe)
- + IP67 (dust- and waterproof)
- + Every point geo-referenced



- + Clearance Profile
- + High-precision measurement of geometries (better than 1 cm)
- + 3D city models
- + Classic surveying
- + 3D surface models
- + Bridge height
- + Road inventory
- + Environment assessment

LIDAR Technology by



www.lehmann-partner.de

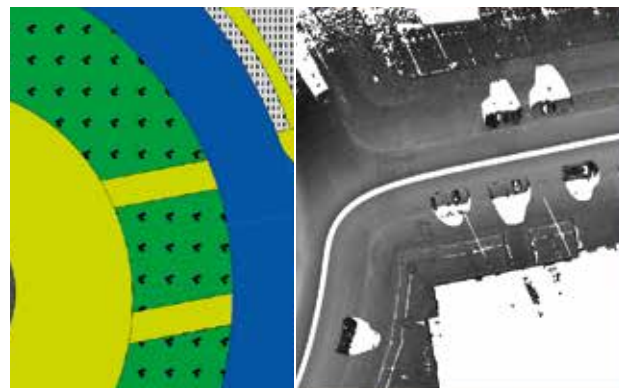
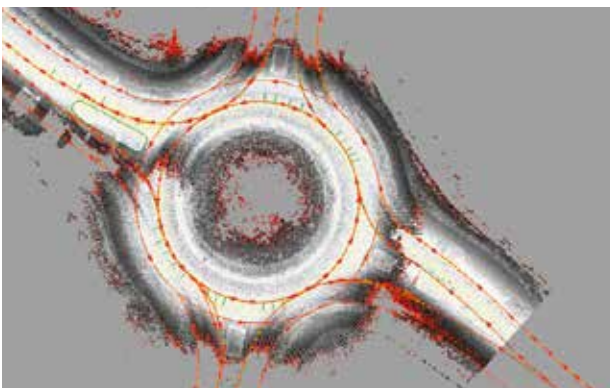
DATA ANALYSIS AND REPRESENTATION



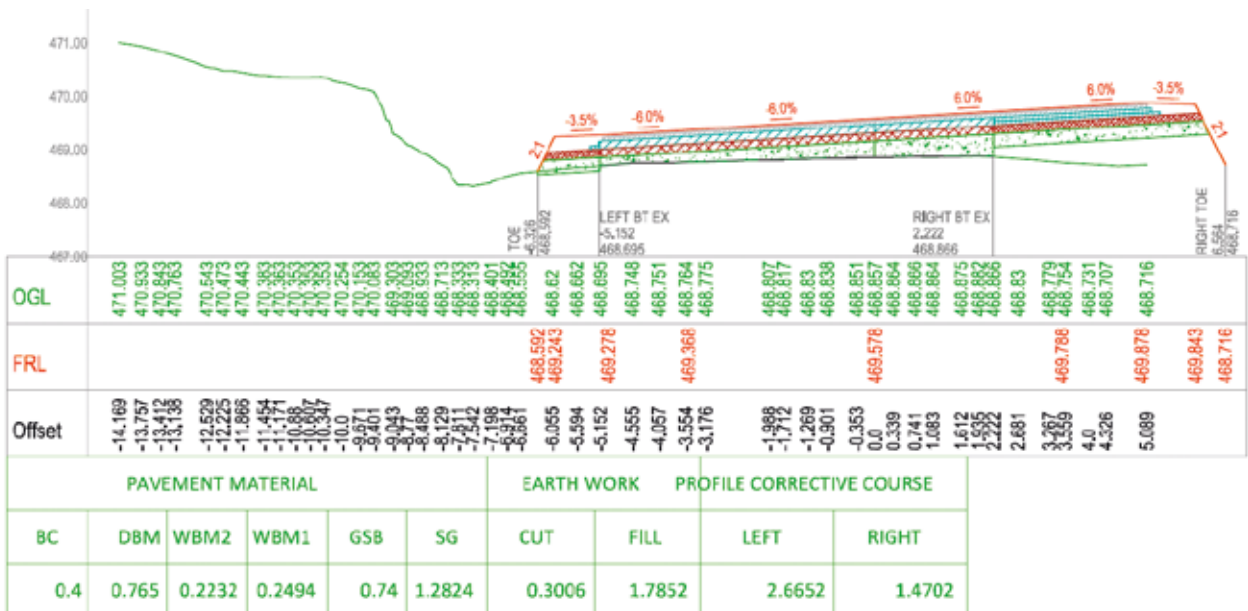
+ Road inventory – 3D position measurement



+ Color-coded clearance height



+ Geo-referenced point clouds as 2.5D surface models in planning or GIS applications



+ Reports as a result of a cross-section analysis